



KLINGER®
trusted. worldwide.

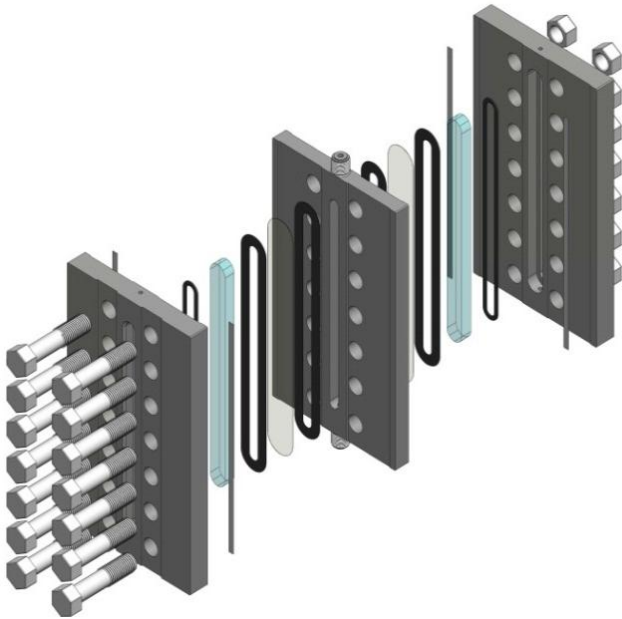
Transparent Level Gauges

TA120-DVK2

PN 250
120 bar
saturated steam

KLINGER TA120: Transparent level gauge for steam applications, suitable for shut-off fittings:

Metal sealed valves DVK2.



Working Conditions

P max

T max

120 bar

323° C

KLINGER Material Codes

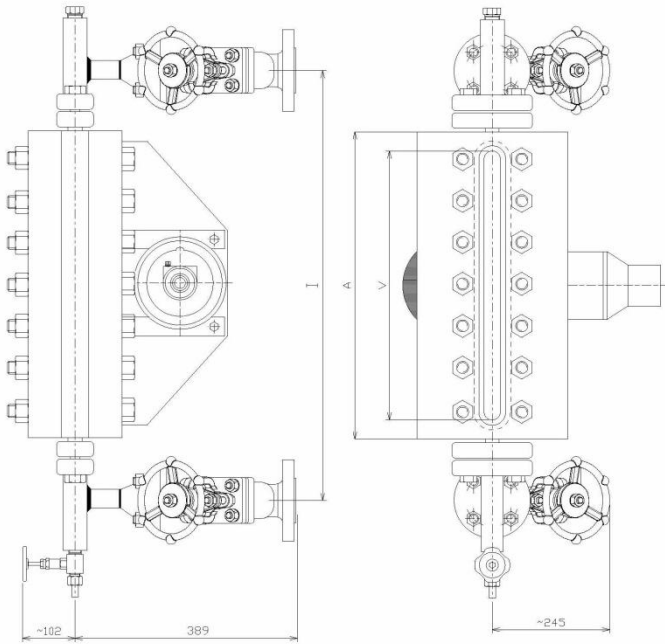
FS/H: components in carbon
steel

Accessories

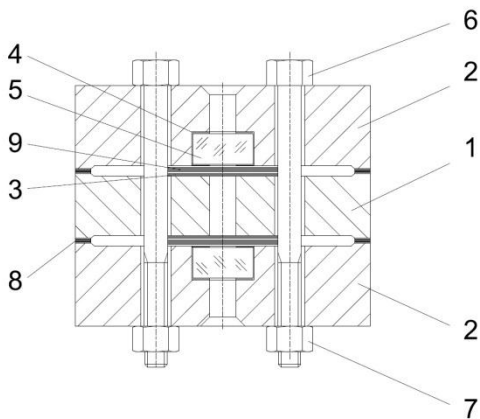
- » Drain/vent cocks
- » External heating or cooling
- » Non-frosting block
- » Graduated scale
- » Illuminator
- » Mica or Kel-shields

Compliance to PED 2014/68/UE when applicable
Compliance to ATEX 2014/34/UE upon request

Design and dimensions could be subject to
modification without notice



Size	Body length	Sight length	Approx weight	Minimum center to center distance (mm)
	A	V	Kg	I min
III	220	145	30,00	353
IV	245	170	33,00	378
V	275	200	38,00	408
VI	305	230	44,00	438
VII	335	260	52,00	468
VIII	375	300	62,50	508
IX	395	320	69,50	528



	Parts	Materials
		FS/H
1	Level Gauge Body	S355J2
2	Cover	S355J2
3	Mica/Shield	MICA
4	Cushion Joint	GRAPHITE PSM
5	Glass	BOROSILICATE
6	Bolts	8.8
7	Nuts	CL10
8	Spacer Strip	AISI 304
9	Sealing point	GRAPHITE PDM

